

# MILLING STUART PTY LTD

34 Bolaro Street, PO Box 96 DUNEDOO NSW 2844  
 P: 02 6375 1009 E: office@millingstuart.com.au

## Sheep Market Report

21ST FEBRUARY 2024 - A LARGER YARDING OF 2733 SHEEP & LAMBS, WITH 1970 LAMBS AND THE BALANCE SHEEP.

A few more shorn lambs just starting to appear and a full field of buyers were keen to operate on all categories of lambs. Extra heavy lambs above 30kg sold firm to \$8/head cheaper while the 26-30kg lambs were \$8-10/head dearer most averaging either side of \$7/kg dressed weight. Light lambs were also dearer for tops and secondary types. Grown sheep were no stronger than last sale to be either side of firm, most competition continues to be on the lighter end.

### VENDOR TOP PRICES

LAMBS		PRICE
PJ & CA Sullivan	xl	\$ 236.00
Yeomont Trading	xl	\$ 224.00
R & M Goodear Pty Ltd	xl	\$ 215.00
PJ & CA Sullivan	xl	\$ 215.00
SHEEP		PRICE
Harry Sourelos	xh	\$ 120.00
Yeomont Trading	xh	\$ 115.00
Nardoo Development Co	xh	\$ 110.00
Pilca Butta Partnership	xh	\$ 100.00
PJ & CA Sullivan	xh	\$ 100.00

### QUOTATIONS

Extra Heavy X Lambs: (30kg+)	\$215 ~ \$236
Heavy X Lambs: (26kg - 30kg)	\$173 ~ \$218
Medium X Lambs: (22kg - 26kg)	\$140 ~ \$181
Light X Lambs: (18kg - 22kg)	\$100 ~ \$160
New Season X Lambs:	~
Merino Lambs:	~
X Ewes:	\$60 ~ \$90
Merino Ewes: (Score 3-4)	\$50 ~ \$76



## FORTHCOMING SALES

Dunedoo Monthly Store Cattle Sale - Wednesday 28th February

Fat Sheep & Cattle Sale - Wednesday 6th March

Fat Sheep & Cattle Sale - Wednesday 20th March

Online Multi-Vendor Machinery Sale - **ON THE BOX** - 18th ~ 22nd March

**DON'T FORGET TO BOOK YOUR STOCK IN TO ENABLE US TO PRESENT YOUR LIVESTOCK IN THE BEST POSSIBLE WAY ON SALE DAY, PLEASE ENSURE YOUR STOCK ARE BOOKED IN WITH THE OFFICE OR ONE OF THE BOYS AS EARLY AS POSSIBLE.**

## DOUBLE CHECK YOUR NVDS ARE COMPLETED CORRECTLY

Common mistakes that could cost you money

1. Illegible Handwriting
2. Ticking both 'yes' or 'no' to a question
3. Not adding your signature where required
4. Making major corrections - ALL CORRECTIONS MUST BE INITIALED
5. Not completing all sections (particularly extra PICs where applicable)
6. Using sample or photocopied NVDs
7. Using one NVD for multiple consignments

With many audits being conducted, it is a timely reminder to ensure your paperwork is completed correctly. You can read more by visiting the Integrity Systems website





# Cattle Market Report

## 21ST FEBRUARY 2024 - 650 CATTLE YARDED

Good falls of rain around the district during the week and Mudgee Fat Sale not operating saw plenty of good quality cattle yarded and strong competition from buyers. We yarded a good run of yearling and feeder steers which were back 20c/kg on last sale, feeder heifers also showed cheaper trends back 30c/kg. An outstanding run of heavy steers and cows saw strong competition, even with one northern processor absent. The top pen of export steers made 320c/kg (519kg) rel \$1,660.80 and the 3-4 score cows sold up to 240c/kg with the tops back 20c/kg on last fortnight.

### VENDOR TOP PRICES

YEARLINGS	PRICE	AV.WGT	HD VALUE
Ewendale Partnership	strs 350.0	428	\$ 1,497.05
IF & MA Circosta	strs 350.0	309	\$ 1,080.96
RA Perry	strs 345.0	408	\$ 1,405.88
Lockerbie Partnership	strs 340.0	405	\$ 1,377.00
WS & AA Coe	strs 340.0	359	\$ 1,219.75

HEIFERS	PRICE	AV.WGT	HD VALUE
Oranmore Pastoral Co	289.2	536	\$ 1,548.53
Yeomont Trading	289.2	530	\$ 1,532.76
Wargundy Pastoral Co	289.2	465	\$ 1,344.78
IA & JG Mate	288.2	580	\$ 1,671.56
PJ & CA Sullivan	287.2	643	\$ 1,845.26
Kapsch Farms Pty Ltd	287.2	512	\$ 1,470.46

### QUOTATIONS

Yrling strs: (350kg - 400kg)	320.0-340.0 c/kg
Yrling hfrs: (350kg - 400kg)	299.2-270.0 c/kg
Trade strs: (400kg - 500kg)	320.0-350.0 c/kg
Trade hrs: (400kg - 500kg)	299.2-270.0 c/kg
Export strs: (500kg+)	285.0-320.0 c/kg
Export hfrs: (500kg+)	266.2-289.2 c/kg
Cows: (3-4 score)	220.0-240.0 c/kg
Heavy Bulls	190.0-226.0 c/kg

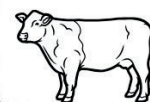
STEERS	PRICE	AV.WGT	HD VALUE
Lockerbie Partnership	335.0	475	\$ 1,591.25
Ewendale Partnership	335.0	451	\$ 1,511.97
WJ Goodman & Company	332.2	463	\$ 1,536.43
G & D Kiem	331.2	458	\$ 1,515.24

COWS	PRICE	AV.WGT	HD VALUE
D & M Deutscher	288.0	680	\$ 1,958.40
MW & EL Cheetham	240.2	590	\$ 1,417.18
Kapsch Farms Pty Ltd	240.0	603	\$ 1,447.20
Wargundy Pastoral Co	239.0	634	\$ 1,514.07
Tinman Farming Trust	239.0	627	\$ 1,497.34

BULLS	PRICE	AV.WGT	HD VALUE
Grathlyn Pastoral Co	226.0	688	\$ 1,555.63
WJ Goodman & Company	220.0	955	\$ 2,101.00
IA & JG Mate	220.0	845	\$ 1,859.00



# DUNEDOO STORE CATTLE SALE



WEDNESDAY 28TH FEBRUARY 2024, 12:00PM START

### COWS & HEIFERS

#### A/c Bulliroy Creek Pastoral

10x10 Angus cows, Angus CAF, 1-3 months, Narranmore bld, NSM.

#### A/c Ewendale Partnership

24x24 Angus hfrs, 1st CAF by the Taloo by Angus bull rejoined to the Angus bull.

#### A/c Woods Family Trust

12x12 Angus X cows, 1st CAF.

#### A/c ML & R Flynn

21 Hereford hfrs, 16-18 mths, Injemira Redford bld.

3 Angus X Hereford hfrs, 16-18 mths.

#### A/c J & A Maben Family Trust

15 Angus hfrs, 8-10 mths.

#### A/c WJ Goodman & Company

15 Angus x Hereford hfrs, 12-14 mths, NSM.

#### A/c DC & J Copeland Pty Ltd

6x6 Angus/Angus X hfrs, 1st CAF, 2-4 mths, NSM.

FURTHER ENTRIES INVITED & EXPECTED. CHECK OUR WEBSITE AND FACEBOOK PAGE FOR UPDATES [WWW.MILLINGSTUART.COM.AU](http://WWW.MILLINGSTUART.COM.AU)

### STEERS & WEANERS

#### A/c ACM Bowman

40 Angus strs, 9-11 mths, Wargundy bld, weaned, very good condition.

40 Angus X strs, 6-8 mths, yard weaned.

#### A/c Shingle Hut Pty Ltd

40 Angus/Charolais strs, 6-8 mths, yard weaned.

#### A/c J & A Maben Family Trust

20 Angus strs, 8-10 mths.

#### A/c BM Swan and KA Thompson

20 Angus strs, 8-10 mths.

#### A/c JM & RG Sheridan

40 Angus mxd sex weaners, 6-8 mths, very good quality, very fresh.

#### A/c Woods Family Trust

12 Angus x Angus strs, 8-10 mths.

#### A/c SJ McClure

30 Hereford strs, 8-10 mths, Clairdale bld.

#### A/c K & K Packham

12 Santa X mxd sex weaners, 6-8 mths.

**MILLING STUART** PTY LTD  
rmanetwork. Accredited Member

JAMIE STUART 0427 467 322 ANGUS STUART 0427 751 009  
JAMES GIBSON 0477 781 009 LACHLAN STUART 0409 920 800



**SAVE THE DATE!**

# ONLINE CLEARING SALE!

ON THE BOX

**18/03/24 - 22/03/24**

MILLING STUART WILL BE RUNNING AN ONLINE MULTI-VENDOR CLEARING SALE "ON THE BOX"

IF INTERESTED IN SELLING ITEMS PLEASE RING ONE OF THE BOYS.

Jamie 0427 467 322 | Angus 0427 751 009  
James 0477 781 009 | Lachie 0409 920 800

**MILLING STUART PTY LTD**  
rmanetwork. Accredited Member

Haven't created a user account with On The Box yet? It's simple, easy, and should take you less than 5 minutes! 🖱️ Visit [onthebox.com.au/register](https://onthebox.com.au/register) to get started now.



Angus, Jamie, James and Lachie are fully accredited Sheep & Cattle AuctionPlus Livestock Assessors. If you are interested in listing livestock on AuctionsPlus please contact us.

**Are your trading details up to date?**  
If there has been recent changes made to your trading details, such as your GST registration status, partnership details, address, bank or contact details, please contact our office to ensure your details are up to date.

**Please take care when drafting & loading your stock for sale. A reminder that there will be a Disposal Fee for all 'unfit for sale' stock i.e. crippled, cancered stock.**

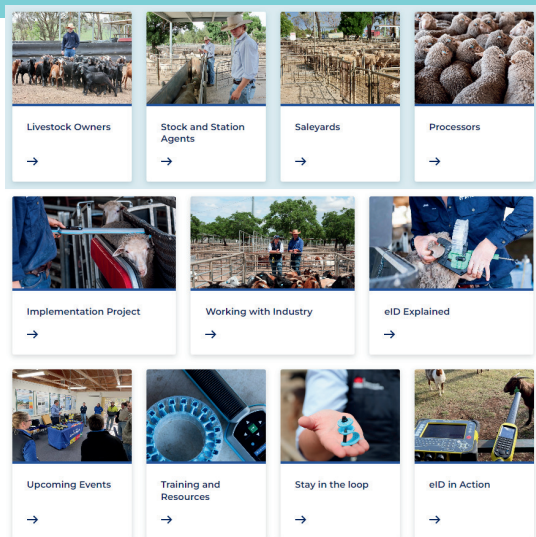
Year	Year	Colour	pink tag = post-breeder tags must be pink
2013	2021	yellow	
2014	2022	red	
2015	2023	sky blue	
2016	2024	black	
2017	2025	white	
2018	2026	orange	
2019	2027	light green	
2020	2028	purple	





Sheep and  
goat electronic  
identification

# UPDATE



## Sheep and Goat eID Rebate Scheme Update

As anticipated, the NSW Sheep and Goat eID Rebate for primary producers has been extremely popular.

As of 16 February 2024, applications are no longer accepted for auto drafters, due to funding allocated to these items being exhausted.

Producers are encouraged to apply for **eID readers and related software**, as well as goat handling equipment for goat producers.

<https://www.raa.nsw.gov.au/grants/eid/producers>

## Improved DPI eID website

This update prioritised information for key sector groups and our team is now spending the next several months adding to the content with more eID training resources, stories and FAQs.

# REAL ESTATE

## 70 TUCKLAN STREET, DUNEDOO



PRICE  
REDUCED

1012 m2 | 3 1 1

- Elevated, north facing block
- Ideal location close to schools
- Large outdoor entertaining area
- Tidy and well maintained
- Split system air conditioning
- Renovated bathroom
- Built-ins in master bedroom

## FOR SALE

# \$400,000

View Inspections by appointment